



RAILWAY PARK RAILWAY LANE NORTH BLOCK 11 RAILWAY LANE SOUTH BLOCK 28

**BLOCK 11 - WEST ELEVATION TO STATION STREET**



**BLOCK 11 - NORTH ELEVATION TO STATION STREET**



**BLOCK 11 - SOUTH ELEVATION TO STATION STREET**



**BLOCK 11 - EAST ELEVATION TO RAILWAY**

- © This drawing is copyright.
- 1 Do not scale this drawing.
- 2 Errors and omissions to be immediately notified to Architect.
- 3 All dimensions to be checked on site.
- 4 To be read with relevant Engineers drawings.

Notes:  
All dimensions in millimetres

External Finishes:  
External Wall Finish:  
Selected brick finish with aluminium cills, trims and caps. Contrasting brick as indicated. Stone or concrete capping to parapets.

Pigmented render finish locally to internal deck elevations.

Wood siding and galvanised steel gates to bike sheds.

Roofs:  
Flat single-ply or metal pitched roofs generally with stone / concrete capping to parapets.  
Green roofs to bike sheds.

Windows/Doors:  
Alu-wood windows to selected colour. Painted timber doors at own-door ground floor apartments.

Selected metal glazed doors to circulation cores. Timber or painted timber solid doors with ventilation louvres to bin store doors.

Pre-cast concrete or steel framed canopies over entrance areas.

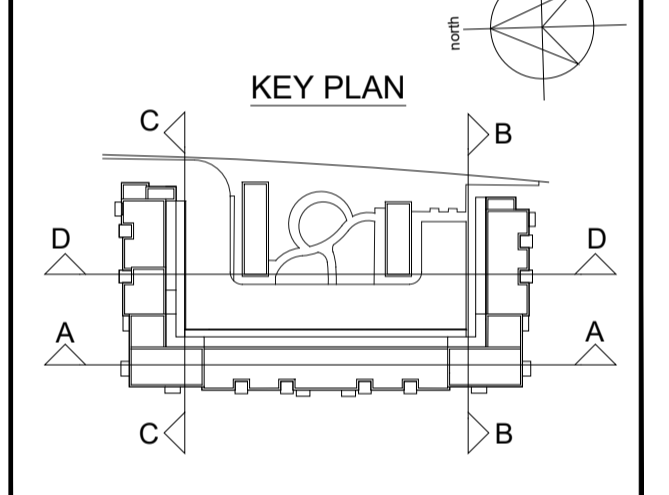
Opaque glazing to communal stair core windows which overlook existing or future adjacent developments.

Glazed 1.8m high wind screens as indicated.

External:  
Metal/Opaque Glass guarding at balconies  
Painted metal railing and brick at deck access walkways.

Soft and Hard landscape as shown on landscape architect's drawings.

Rainwater goods:  
uPVC or aluminium downpipes.



revisions date ins

description	revn.	date	ins
Block 11 North & South & East & West Elevations	P		

job  
**Block 11, Clongriffin, Dublin 13**

client  
**Gerard Gannon Properties**

issue  
**Clongriffin SHD 1 Planning**

**CONROY CROWE KELLY ARCHITECTS & URBAN DESIGNERS**

65 MERRION SQUARE DUBLIN 2

phone 01 6613990 fax 01 6765715 email info@ck.ie